

# South Calcutta Girls' College

## ADDITIONAL INFORMATION (PHOTOGRAPHS)

### CRITERIA 4

#### METRIC POINT 4.3.1

### **ICT ENABLED TEACHING FACILITIES**



**ICT ENABLED AUDITORIUM CAN BE USED FOR BOTH ACADEMIC AND CULTURAL PURPOSES**



**VIRTUAL CLASS ROOM**



**SMART ROOM WITH INTERACTIVE BOARD**

# South Calcutta Girls' College



**COMPUTERS ARE USED IN  
PSYCHOLOGY LABORATORY**



**ICT ENABLED CLASSROOM (404)**



**BOTANY DEPARTMENT EQUIPPED WITH  
COMPUTER**



**AUDIO-VISUAL ROOM**

# South Calcutta Girls' College

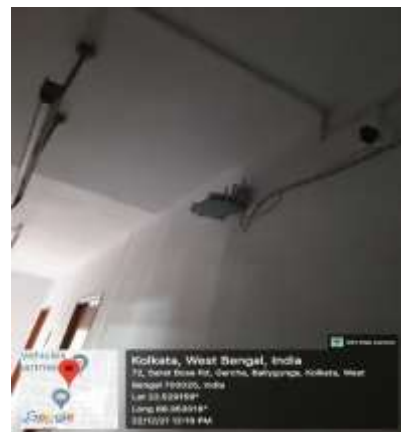
## **AVAILABILITY OF INTERNET FACILITIES**



**THE WHOLE CAMPUS ENJOYS HIGH SPEED INTERNET**



**ROUTER IS INSTALLED IN THE STUDENTS' COMMON ROOM.**



**WI-FI CONNECTION IS AVAILABLE IN HOSTEL ALSO.**



**INTERNET FACILITIES ARE EXTENDED WITH ROUTERS IN EACH FLOOR**

## South Calcutta Girls' College



**BROWSING CENTRE IN THE COLLEGE LIBRARY BY N-COMPUTING SYSTEM**

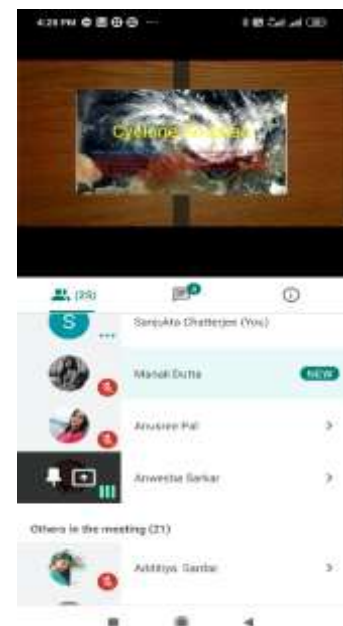
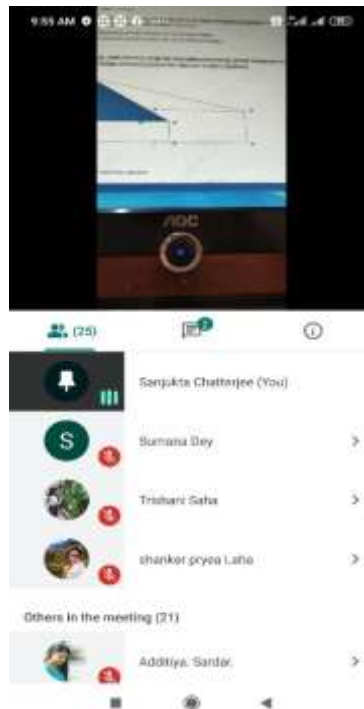
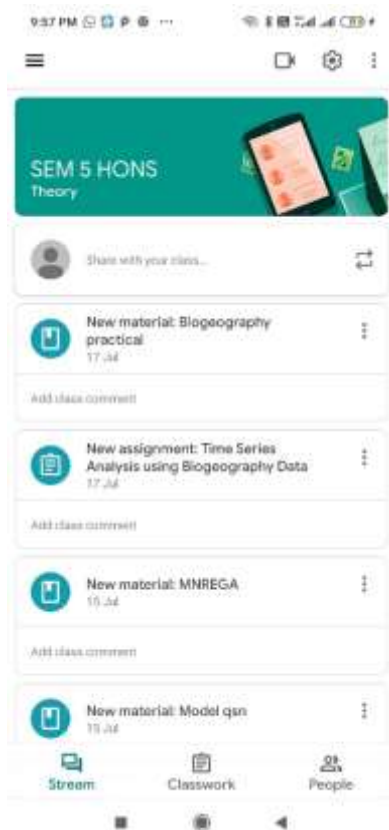
**TEACHERS CAN AVAIL INTERNET FACILITIES FROM THE STAFFROOM ALSO**





# South Calcutta Girls' College

## VIRTUAL TEACHING DURING COVID-19 PANDEMIC



STUDY MATERIALS ARE UPLOADED ON GOOGLE CLASSROOM

GOOGLE MEET IS USED TO TAKE CLASSES

SEMINARS ARE ORGANISED ON GOOGLE MEET PLATFORM

# South Calcutta Girls' College

**COLLEGE PROVIDES AND UPDATES TEACHING SOFTWARES**



**DEPARTMENT OF JOURNALISM AND MASS COMMUNICATION USES VARIOUS EDITING SOFTWARE**



**STUDENTS ARE USING STEREO VOICE RECORDER IN JOURNALISM LABORATORY**      **MICROSCOPE WITH DIGITAL CAMERA ATTACHMENT**

**IS ADDED IN THE ZOOLOGY LABORATORY**

# South Calcutta Girls' College

## LIBRARY AND OFFICE IS PARTIALLY AUTOMATED



RFID STAFF STATION IN COLLEGE LIBRARY



LIBRARY USES DSPACE SOFTWARE



OFFICE AUTOMATION HAS BEEN DONE FOR DECADES



"CampusXpert" -STUDENT MANAGEMENT SOFTWARE



"Tally"- FOR HANDLING FINANCE

## IT ENABLED SECURITY MEASURES



CLOSE CIRCUIT CAMERAS AT FRONT AND BACK SIDES OF THE COLLEGE BUILDING



RFID GATE AT COLLEGE LIBRARY



CCTV MONITOR TO KEEP CLOSE WATCH